

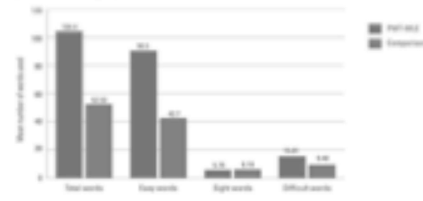
Table 10: Individual results for grade 1, semester 1, part 1 letter direction Thai writing assessment selected from Ruesangrit, 2016

	1. All consonants & vowels correct -C+V	2. All consonants correct but not all vowels -C+V	3. All vowels correct but not all consonants -C+V	4. Errors in both consonants and vowels -C+V
PAET-MEJ (n=6)	33.33%	7.78%	8.33%	5.56%
Comparison (n=45)	8.22%	7.08%	3.98%	25.00%

Table 12: Individual results for grade 1, semester 1, part 5 sentence writing Thai writing assessment selected from Ruesangrit, 2016

	1. Full sentence with 2-3 words	2. Phrases (VP/CP) only	3. Word only	4. Letter only	5. Left blank
PAET-MEJ (n=6)	33.33%	33.33%	3.33%	0.00%	0.00%
Comparison (n=45)	17.78%	3.33%	4.44%	11.11%	63.33%

Figure 26: Distribution of word types used in third grade, second semester Thai writing assessment results selected from Ruesangrit, 2016



## Annual Evaluations (Grades 1-6)

Figure 28: Performance of PAET-MEJ and comparison students on grade 1 comprehensive evaluation selected from Hattis, 2015

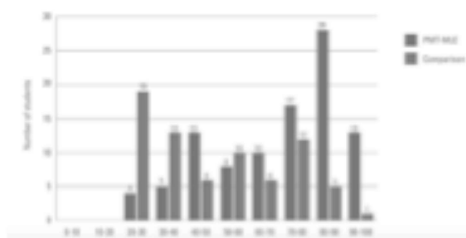


Figure 29: Average scores, 2 subjects plus reading (grades 1-6, cohorts 1 & 2)

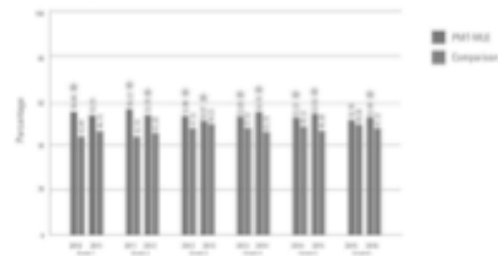
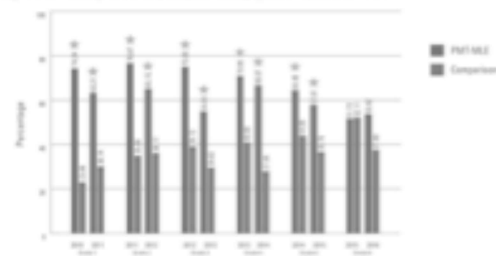


Figure 30: Passing rate, 2 subjects plus reading (grades 1-6, cohorts 1 & 2)



## PROGRAMME RESULTS: THE FOUR 'WINS'

- Better Thai letter direction on a Thai text
- Improved learning of all subjects across all ages/grades
- Improved O-NET scores (O-NET is a national exam)
- Strong community support for the model

### COMMUNITY RESPONSE

The model has been widely adopted in Thailand and has been used as a model for other schools in the country. The model has been used in other countries and has been widely adopted in Thailand and other countries.

